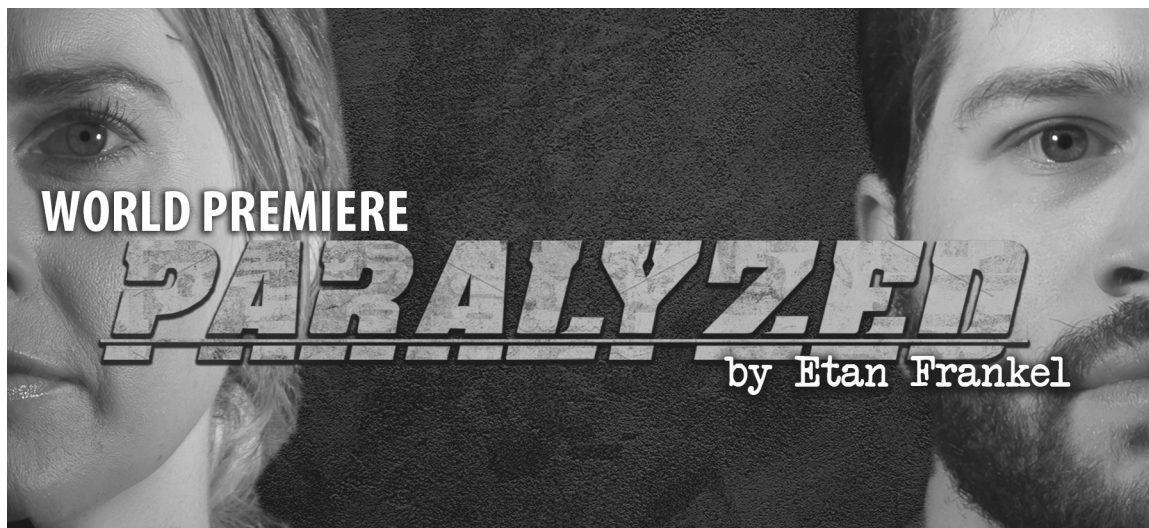
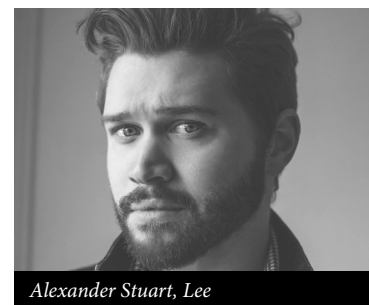


# STAGE DIRECTIONS

*PARALYZED | STAGE III*



a person, and likewise my challenge as an actor, is to demonstrate that he truly is a well-meaning man, but he has a good deal of growing up to do and reparations to make."



# PARALYZED IN PARALLEL

BY BENEDICT BURGESS

**As the old adage goes, "If you want to make God laugh, show him your plans."**

This axiom couldn't be more true for the characters in Etan Frankel's *Paralyzed*, a World Premiere about the power of forgiveness, personal responsibility, and unpredictable nature of life.

One minute, Lee is an accomplished football player on his way to the big leagues—until a single careless play craters his career. Meanwhile, Leigh is a humanitarian fighting to

heal the masses—until the *masses* become *monsters*. Their lives have seemingly reached dead ends—until a mysterious note reveals alternate paths that lead their lives in unforeseen directions.

In *Paralyzed*, characters Lee and Leigh face challenges like disability, drug use, and divorce. But their biggest challenge doesn't come from an unfair outside world. It comes from their own hearts and minds.

"Leigh protects herself with probability," said actress Rachel

Moulton, who plays Leigh, a driven statistician who uses her skills to help others, in FST's production. "The idea of leaping into the darkness and embracing the unknown is terrifying to her. But existing this way is crippling her. It's devastating. She is such a brilliant mind but has been afraid to really live."



Lee, in contrast, is a social butterfly. Guys want to *be him*. Girls want to be *with him*. But it all changes when tragedy strikes.

"That's when you see how ill-equipped Lee is for an independent life," said actor Alexander Stuart, who plays Lee, an aggressive former athlete. "His challenge as

*Paralyzed* reminds audiences about how arbitrary life can be—how one decision can irreversibly alter a life. In many ways, this engaging drama holds a mirror up to the audience, stirring them to think about the decisions they have—or have not—made in the past.

"Leigh and Lee struggle to come to terms with the choices they have made—or the lack thereof," said Meg Gilbert, the show's Director. "*Not* making a choice is what truly haunts us, and the last thing we want to see is our wrongs reflected back to us."

Audiences may recognize actors Moulton and Stuart. *Paralyzed* marks Moulton's 10th production at FST. Recent past shows include *Grounded*, *Honor Killing*, and *Wednesday's Child*. She also was seen *The Curious Incident in the Dog in the Night-Time* alongside Stuart in his FST debut. Both are looking forward to sharing the FST stage again one season later in this World Premiere.

"This story is so raw and relatable," said Moulton. "I think people will draw parallels to their own lives and circumstances. I imagine it might be difficult, but also quite cathartic." ■

## Performance Checklist

- ☐ **You are attending this performance in Bowne's Lab Theatre.**
- ☐ **Have you checked your show time?**
- ☐ **Are you joining us for pre-show dining 60 minutes prior to your show?**
- ☐ **Do you have your tickets or will you be picking them up from will call?**



# Dine With Us!

*Pre-Show Dining with FST is Delicious, Affordable, and Convenient.*

**We are excited to feature our Winter menu with NEW items. Our appetizers and entrees are fresh baked in house daily and now feature Boar's Head premium deli meats and cheeses.**

**Fan favorites like Lobster Bisque, Brie Almondine, and others are still available.**

**For the full menu visit [floridastudiotheatre.org](http://floridastudiotheatre.org).**



## NEW ITEMS!

### Boar's Head Cabaret Board \$21.95

Prosciutto, fennel salami, dill Havarti, Gouda, fruit preserves, sweet peppers, heirloom grape tomatoes.

### Beet & Walnut Salad \$14.95

Mixed greens, beets, walnuts, heirloom grape tomatoes, and goat cheese.

\*Add baked chicken \$4.00, shrimp \$5.00

### New Harvest Salad \$10.95

Mixed greens, chickpeas, pears, bacon and feta.

\*Add baked chicken \$4.00, shrimp \$5.00

### Boar's Head Harvest Turkey Sandwich \$14.95

Boar's Head Ovengold roasted turkey breast, heirloom tomato, brie, and fruit preserves on a Kaiser roll

### Cabaret Meatloaf \$15.95

Fresh-baked meatloaf with gravy, served with roasted potatoes and mixed vegetables.

### Pulled Pork Sandwich \$10.95

Pulled brisket, tangy barbeque sauce, heirloom tomato, and Fontina on a Kaiser roll.

*Doors open 60 minutes before showtime. Patrons must arrive at least 30 minutes prior to showtime in order to dine.*

*\*menu items are subject to change.*

## Be Sure to Double Check Your Show Time Before Dining!

**Performances at 2PM**  
dining begins at 1PM

**Performances at 7PM**  
dining begins at 6PM

*\*Reservations are not required for the above performance times*

**For 1:30PM performances,**  
*join us for pre-show dining in the Green Room Café & Bar.*

**For 5PM performances,**  
*dine with us after your show in the Green Room Café & Bar.*

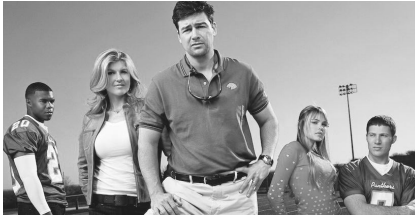
*Reservations are required for the Green Room Café & Bar and can be made by calling 941.366.9000.*





# ETAN FRANKEL: THE UN-*PARALYZED* PLAYWRIGHT

Since graduating from Duke University and the Julliard School in New York, Etan Frankel has been anything but creatively paralyzed. Beginning his career as a theatrical playwright, Frankel transitioned to the world of television. For over a decade, Frankel has brought the same humor, suspense, and humanity present in *Paralyzed* to some of the most popular and prestigious programs of the 21st century, including:



## Friday Night Lights (2005-2011):

Inspired by H.G. Bissinger's book, *Friday Night Lights: A Town, a Team, and a Dream*, and the 2004 Peter Berg movie based on it, *Friday Night Lights*, this Emmy Award-winning television series follows a rural Texas high school football team as they struggle to stand up against the immense pressures bearing down on them all—coaches and players alike—during their quest for success.



## Gossip Girl (2007-2012):

Based on the best-selling novels of the same name, this hit teenage drama series from the CW Network delves into the lies and liaisons linking a group of wealthy teenagers in Manhattan's Upper East Side, as well as their attempts to find their place in a social scene as precarious as it is glamorous.



## Shameless (2011-Present):

Starring William H. Macy, Emmy Rossum, and Joan Cusack, this critically-acclaimed and Emmy-winning SHOWTIME dramedy follows the Gallaghers, an unapologetically eccentric family of seven fighting to assert their dignity and humanity, despite debilitating poverty.

## HUMAN CONNECTION: DIFFERENT IDEAS ACROSS DIFFERENT CULTURES.

**Ubuntu:** a humanist philosophy derived from the African proverb, "Ubuntu nguntu ngabanye abantu," meaning, "A person is a person through other people." This proverb reflects a social worldview in which the individual "self" only exists because of other people. It believes that the best way to behave is to mirror the humanity we see in the community that surrounds us and love us.



# FST STAGE III NEWS

1241 North Palm Avenue • Downtown Sarasota, FL 34236  
floridastudiotheatre.org • info@floridastudiotheatre.org



## WORLD PREMIERE **PARALYZED** by Etan Frankel

NON-PROFIT ORG.  
U.S. POSTAGE  
**PAID**  
PERMIT NO. 224  
MANASOTA, FL

## Parking & Campus Map

Free parking can be found on all levels of the ICORR Garage, during evenings and weekends only. The ICORR Garage is located on the west side of Palm Avenue in the One Sarasota Tower. Additional free parking is available next to and across the street from FST's Hegner Theatre Wing. On-street parking is available free of charge throughout the downtown area.

More parking can be found in the Palm Avenue Parking Garage located on the east side of Palm Avenue. The Palm Avenue Parking Garage is free for the first 2 hours. See the map to the right for parking locations.

- ★ Available Parking
- 1 Keating Theatre
- 2 Goldstein Cabaret
- 3 Gompertz Theatre
- 4 John C. Court Cabaret
- 5 Bowne's Lab Theatre
- ↑ Street Directions
- ★ ♿ Handicap Parking
- ♿ ♿



## \*Special Reminder

The Green Room is FST's café and bar conveniently located in the Israeloff Lobby and offers a varied menu and full bar service. Call (941) 366-9000 to make your reservations today.

